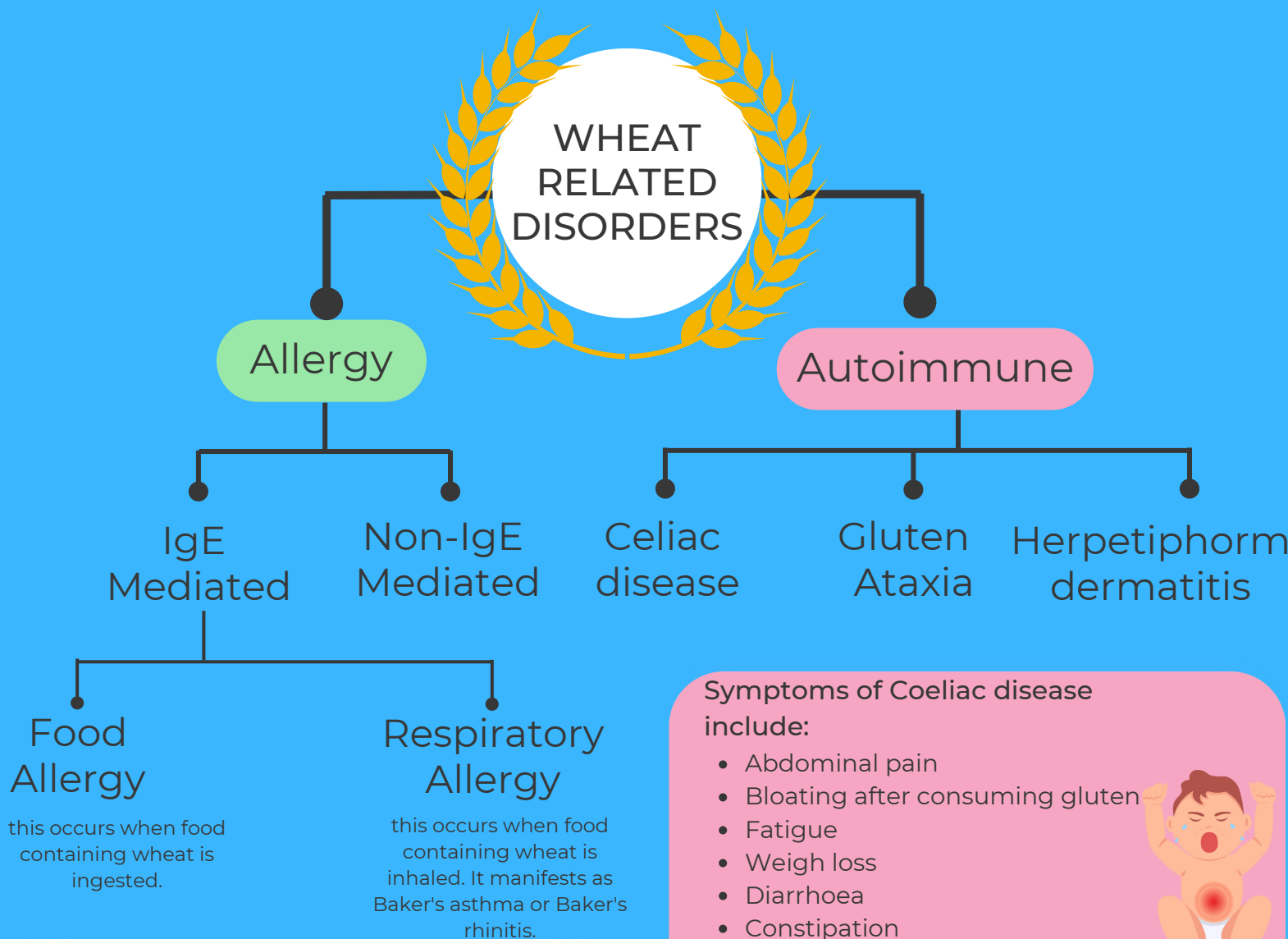


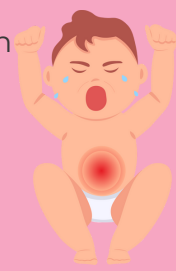
CHAPTER 3

SCHEMATIC ILLUSTRATION OF DIFFERENCE BETWEEN WHEAT ALLERGY AND COELIAC DISEASE




Symptoms of Coeliac disease include:

- Abdominal pain
- Bloating after consuming gluten
- Fatigue
- Weigh loss
- Diarrhoea
- Constipation
- Headaches
- Foul-smelling stools



Symptoms of Wheat Allergy may include:

- Headaches
- Hives, itchy rash
- Nasal Congestion
- Difficulty breathing
- Cramps, nausea or vomiting
- Diarrhoea
- Anaphylaxis



This illustration is a supporting document for 'Thrive Allergy free'.
Copywrite 2023

